

PRODUCER / ADVERTISER: MyWam Sp. z o.o.

CE



Illustrative photo



octo

Instructions for use

Edition 2 / 2026-04-24

Standing frame OCTO

THIS IS A MEDICAL DEVICE.

USE IT ACCORDING TO THE INSTRUCTIONS FOR USE OR THE LABEL.

INTENDED USE OF THE MANUAL

The instructions for use are intended for people who provide direct care for disabled people (user assistants - parents, guardians) who will use the standing frame. It is also intended for doctors and physiotherapists operating the standing frame.

ATTENTION! Before using the standing frame, each User is obliged to read and follow this instruction.

ATTENTION! In the event of any medical incident related to the OCTO standing frame, the Manufacturer and the competent authority of the Member State in which the user or patient resides must be notified immediately in writing by contacting us by registered letter or e-mail with acknowledgment of receipt.

Manufacturer's contact details:

- postal address: MyWam Sp. z o.o., Plebiscytowa 3, 41-100 Siemianowice Śląskie, Poland
- Contact phone number: +48 32 733 11 31
- Email Address: mywam@mywam.eu



Version of the Instructions for Use: EN **Edition 2 / 2026-04-24**

MyWam Sp. z o.o. reserves the right to introduce technical and commercial changes to the content of the Instructions for Use without prior notice. Any change will be determined by the date the statement was last updated. The electronic version of the manual will be available on the website of www.mywam.eu

ATTENTION! The photos included in the Instructions for Use are for reference only and may differ from the purchased product.

MyWam Sp. z o.o. has implemented a quality management system compliant with the ISO 13485 standard in the field of design, production and sale of class I medical devices.



ISO 13485

LL-C (Certification)



TABLE OF CONTENTS

INTENDED USE OF THE MANUAL	2
TABLE OF CONTENTS.....	3
1. INTENDED USE AND INDICATIONS FOR USE	4
2. PLATES.....	5
3. SYMBOL MARKING	5
4. IMPORTANT SAFETY TIPS AND REGULATIONS.....	6
5. GENERAL CONSTRUCTION OF THE STANDING FRAME	7
6. STANDING FRME FEATURES.....	9
6.1. Installation of the standing frame.....	9
6.2. Wheels with brakes.....	11
6.3. Torso support	11
6.4. Hip support.....	13
6.5. Chest / hip pads.....	13
6.6. Stabilizing belt (hip and chest)	15
6.7. Knee support	16
6.8. OctoStep - foot support system.....	18
6.9. Standing.....	21
6.10. Foot lock.....	22
6.11. Abduction.....	23
7. OPTIONAL EQUIPMENT.....	24
7.1. Therapy tray	24
7.2. Headrest.....	26
7.3. Back support for anterior standing with bracket.....	29
8. TECHNICAL SPECIFICATION OF THE OCTO STANDING FRAME	32
8.1. Raw material composition of the standing frame	33
9. DELIVERY AND TOOLS	34
10. MOUNTING AND DISASSEMBLING THE RISER	35
11. PREPARATION FOR USE.....	36
12. MOVING THE STANDING FRAME	36
13. CORRECT POSITION IN THE STANDING FRAME	36
14. USING THE STANDING FRAME	37
15. TRANSPORT IN THE CAR AND IN OTHER VEHICLES.....	37
16. CLEANING AND CARE	37
17. STORING THE STANDING FRAME	38
18. SERVICE AND PERIODIC INSPECTIONS	38
19. DISPOSAL.....	39
20. COMPLIANCE WITH MEDICAL DEVICE REQUIREMENTS	39
21. LIST OF AUTHORIZED SERVICE POINTS	40
22. WARRANTY CARD.....	41
23. NOTES.....	42

1. INTENDED USE AND INDICATIONS FOR USE

The standing frame OCTO is a class I medical device indicated for use by those disabled people who, due to their condition, cannot take and maintain an upright position on their own.

The device is designed to upright and stably position the patient in an upright position. It is used in diseases requiring upright in people who have temporarily or permanently lost the ability to take this position on their own, and this is its intended use.

The product is designed for users from **90-130 cm** and weighing up to **50 kg**. The device should be used in accordance with the recommendations of the attending physician or physiotherapist.

Clinical indications are m.in:

- ✓ cerebral palsy,
- ✓ paralysis of various origins,
- ✓ spina bifida,
- ✓ meningeal hernia,
- ✓ spinal muscular atrophy – SMA,
- ✓ metabolic syndromes,
- ✓ scoliosis of the spine, postural defects,
- ✓ genetic diseases,
- ✓ all kinds of orthopedic indications.

Indications:

- ✓ improving the functioning of internal organs,
- ✓ stretching,
- ✓ bone mineralization,
- ✓ strengthening the body.

Contraindications:

- ✓ orthopedic contraindications,
- ✓ inflammation,
- ✓ osteoporosis,
- ✓ joint contractures,
- ✓ neurological contraindications,
- ✓ severe pain preventing uprightness,
- ✓ acute inflammation, fever,
- ✓ foot deformities,
- ✓ lack of patient cooperation (e.g. severe disturbances of consciousness, agitation).

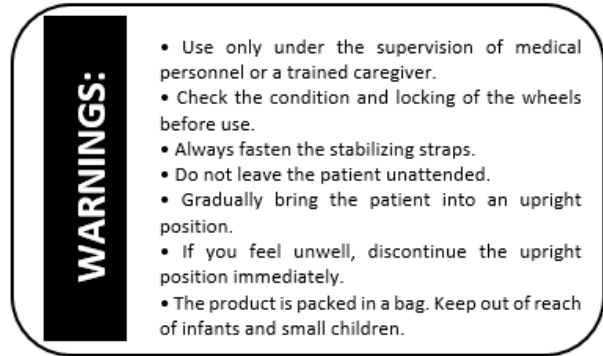
Do not use the upright device in cases where the patient's condition does not allow it. Never leave the user alone in the appliance without adult supervision.

2. PLATES

Nameplate



Warning Plate



3. SYMBOL MARKING

	Product serial number		Manufacturer Name
	Permissible total user weight		The product is a medical device
	Date of manufacture		DESCRIPTION " WARNING! " and the symbol in this manual are used to enhance the reader's attention to the content marked with this mark. Failure to comply with the content marked with this description may pose a risk to the health and safety of the user and accompanying persons, and may also lead to damage to the product.
	Conformity assessment mark according to relevant European regulations and directives		
	Warning about Handling the Product Instructions for Use		

4. IMPORTANT SAFETY TIPS AND REGULATIONS

- It is forbidden to use the upright in a way for which it is not intended.
- The product contains small parts that can be dangerous if swallowed by a child!
- **ATTENTION!** Make sure all adjustment elements are properly tightened and secured.
- **ATTENTION!** It is prohibited to move the standing frame on stairs (up and down), both with and without the user.
- **ATTENTION!** The parking brake must always be engaged during use.
- **ATTENTION!** When using and operating the upright and when folding and adjusting the mechanisms, there may be a danger of trapping and/or squeezing parts of the user's/caregiver's body in the holes/gaps between the components. You should do these steps with special care. Once the adjustment is complete, the position must be stabilized by tightening the nuts/bolts thoroughly.
- **ATTENTION!** When passing through a door or similar constriction (NOTE: without user), restricting the direction of travel, make sure that there is adequate space on both sides to prevent your hands or other parts of your body from getting trapped, as well as to prevent damage to the product.
- **ATTENTION!** Do not exceed the maximum permissible user weight.
- **ATTENTION!** The temperature of the standing frame can increase when it is exposed to sunlight. It is recommended not to expose the riser to sunlight.

WARNING!



- Use only under the supervision of a healthcare professional or trained caregiver.
 - Check the technical condition and wheel locks before use.
 - Always fasten the stability belts.
 - Do not leave the patient unattended.
 - Upright gradually.
 - In case of malaise, stop the upright immediately.
 - The product is packed in a bag. Keep out of reach of infants and young children.
-
- **ATTENTION!** It is forbidden to use the product if the technical condition of the product or its individual element raises doubts of the user or is clearly incorrect, then it must not be used. In such a situation, it is recommended to contact the Seller urgently for advice.

5. GENERAL CONSTRUCTION OF THE STANDING FRAME

Basic equipment



- 1- Chest stabilizing belt
- 2- Hip stabilizing belt
- 3- Knee support
- 4- OctoStep - foot support system
- 5- Wheel with brake
- 6- Torso support
- 7- Hip support

- 8- Column
- 9- Gas spring release foot of vertical column with foot lock
- 10- Tool kit bag
- 11- Chest pad
- 12- Hip pad
- 13- Leg abduction
- 14- Frame of standing frame

Optional equipment



- 1- Therapy tray
- 2- Headrest for anterior standing with bracket
- 3- Headrest for posterior standing
- 4- Back support for anterior standing with bracket

6. STANDING FRME FEATURES

6.1. Installation of the standing frame



Screw all wheels to the frame



Pull your leg towards you



ATTENTION! To install the rear leg, use a 10mm ring wrench and a 5mm Allen wrench (included).

ATTENTION! Check the tightening of the screws. Loose components may shift and cause a risk of injury to the user.

7



8



ATTENTION! To assembly and adjust the height of the column, use a 5mm Allen key (included).

ATTENTION! Check the tightening of the screws. Loose components may shift and cause a risk of injury to the user.

Screw the column to the frame

9



10



Screw the foot support system and knee support to the legs abduction

11



12



Screw on chest and hip pads



13

6.2. Wheels with brakes



Wheel unlocked



Wheel locked



ATTENTION! When using and adjusting the standing frame, make sure that the brake is locked in all wheels.

6.3. Torso support

Assembly/disassembly



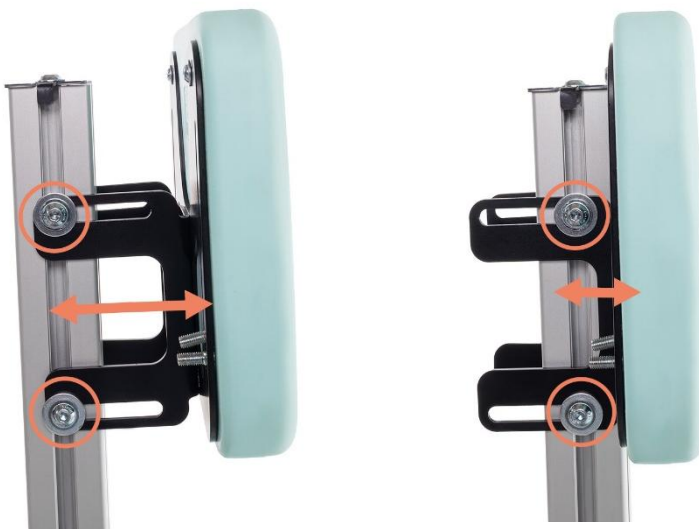
Assembly/disassembly of the torso support using the marked screws and a 5mm Allen key.

Height adjustment



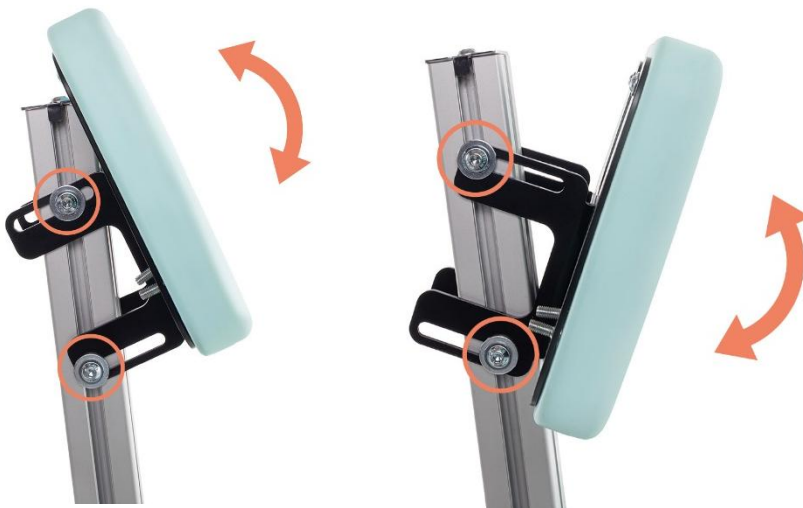
Loosen both screws and adjust the height of the support. Once the height is set, tighten the screws.

Depth adjustment



Loosen both screws and adjust the depth of the support. Once the depth is set, tighten the screws.

Angle adjustment



Loosen both screws and adjust the angle of the support. Once the angle is set, tighten the screws.

6.4. Hip support



Assembly/disassembly and all adjustments of the torso support using the marked screws and a 5mm Allen key.

Loosen both screws and adjust the angle, depth, and height of the support similar to the torso support. When you are done setting up, tighten the screws.

6.5. Chest / hip pads

Assembly the pads



ATTENTION! To install the pads, use a 10mm ring wrench (included).

Tighten the pad with screws

Forward/backward adjustment



ATTENTION! To adjust the pads, use a 10mm ring wrench and a 5mm Allen wrench (included).



Width adjustment



Height adjustment



6.6. Stabilizing belt (hip and chest)



ATTENTION! Always fasten your stability belts.

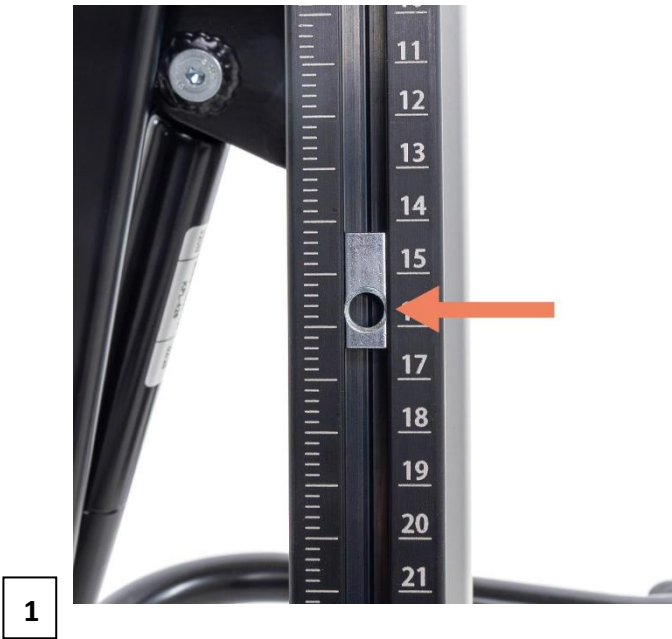
Belt fastening to the pad



6.7. Knee support

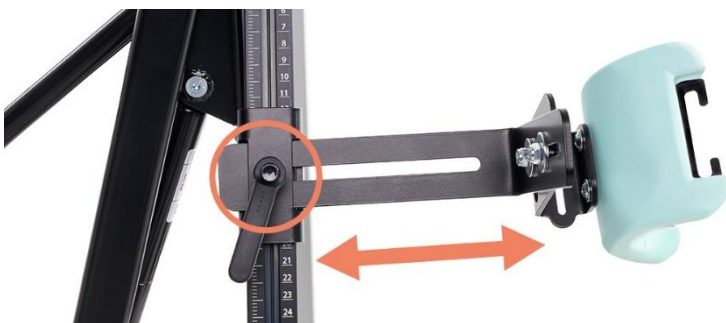


Assembly knee supports



Screw the handle to the leg

Forward/backward adjustment



Maximum setting



Minimum setting

Width adjustment



ATTENTION! After adjusting the knee supports, check the tightening of the screws. Loose components may shift and cause a risk of injury to the user.

ATTENTION! To adjust the knee supports, use a 10mm ring wrench (included).

Loosen the screws and set the width of the supports, then tighten the screws



Minimum setting



Maximum setting

Angle adjustment





Loosen the screws and adjust the supports, then tighten the screws

Fastening/unfastening the belt



Fastening the belt



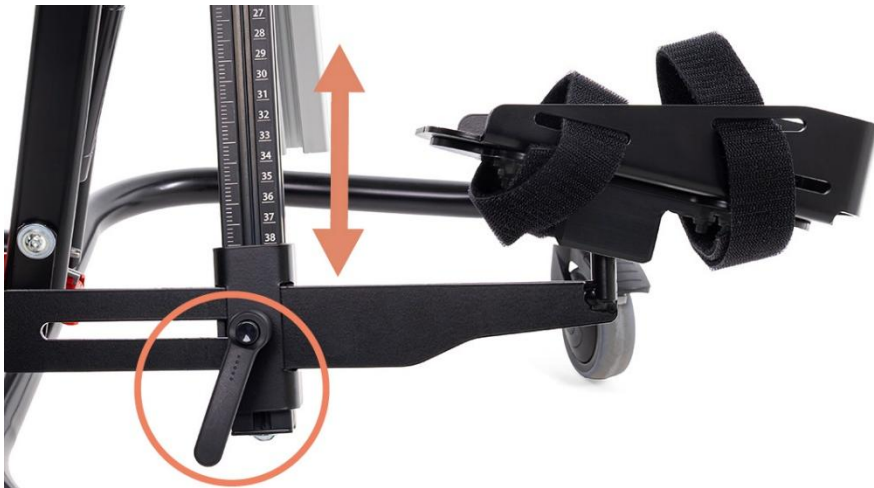
Unfastening the belt

6.8. OctoStep - foot support system

Assembly the foot support system to standing frame



Height adjustment

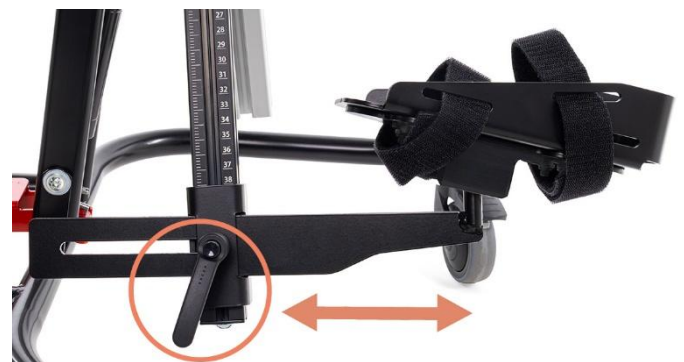


Loosen the handle and adjust the height. Once the height is adjusted, tighten the adjustable handle.

Forward/backward adjustment



Maximum setting



Minimum setting

In-plane adjustment



ATTENTION! After adjusting the foot support system, check the tightening of the screws. Loose components may shift and cause a risk of injury to the user.

ATTENTION! To adjust the foot support system in-plane, use a 4mm Allen key (included).

Width adjustment



ATTENTION! To adjust the width of the foot support system, use a 10mm ring wrench and a 4mm Allen wrench (included).

Installation of the footrest for upright



Anterior standing



Posterior standing

6.9. Standing



WARNING! It is recommended to perform standing starting from a lying position, gradually progressing to a standing position.

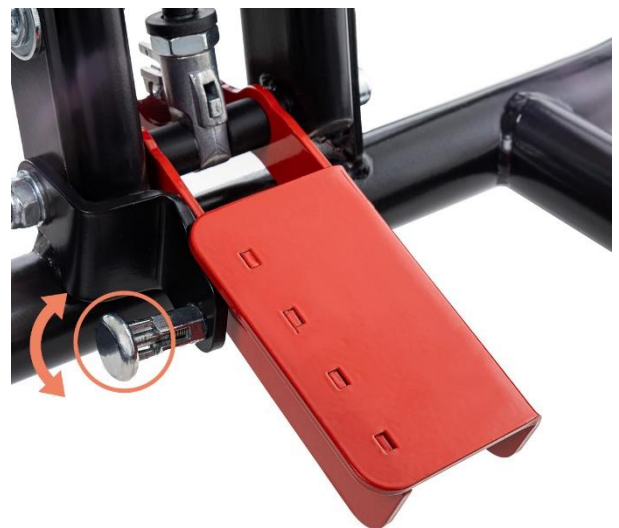
ATTENTION! During standing, the brake on each wheel must always be engaged.

**1**

Lock all wheels

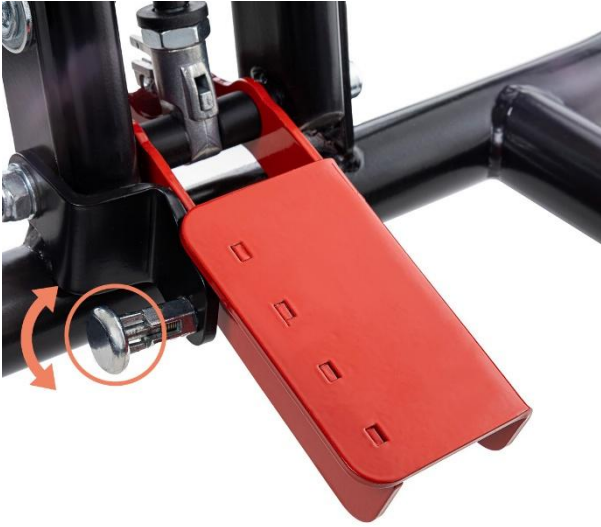
**2**

Hold the gas spring release foot and set the standing angle

**3****4**

After setting the standing angle, secure the gas spring release foot with a foot lock

6.10. Foot lock



ATTENTION! The user must not remain on the device if the foot lock is open.



Open Lock



Closed Lock

6.11. Abduction



Possibility of abduction of the lower limbs in the range of 0-25° per leg.

ATTENTION! It is recommended to set the abduction angle between **30 and 45°**.

ATTENTION! The device may only be operated and adjusted under the supervision of a medical staff or a trained caregiver.

ATTENTION! To adjust the height of the abduction, use a 5mm Allen wrench (included).

1



2



Loosen the handle and adjust the abduction angle

3



Abduction angle range

4



7. OPTIONAL EQUIPMENT

7.1. Therapy tray



The maximum load of the therapy tray is 2kg.

ATTENTION! To assemble and adjust the therapy tray, use a 4mm and 5mm Allen key (included).



Assembling the therapy tray





Tighten the marked screws

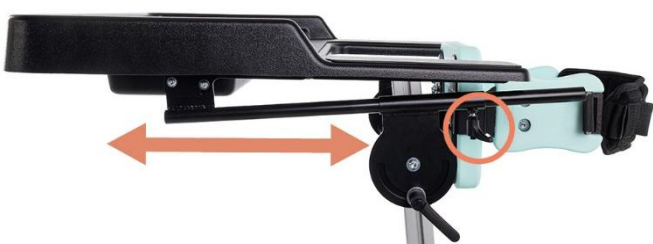


Slide the therapy tray into the guides and screw the adjustable handle

Tilt angle adjustment



Therapy tray extension adjustment



7.2. Headrest

Posterior standing

Headrest Assembly



Slide the headrest into the column and tighten the adjustable handle.

Headrest height adjustment



Loosen the adjustable handle and adjust the height of the headrest. Once the height is adjusted, tighten the adjustable handle.

Headrest tilt adjustment



Loosen the adjustable handle and adjust the tilt of the headrest. Once the tilt is set, tighten the adjustable handle.



ATTENTION! After adjusting the headrest, check the tightening of the elements. Loose components may shift and cause a risk of injury to the user.

Anterior standing



ATTENTION! To assembly the headrest for anterior standing, use a 5mm Allen key (included).

Headrest Assembly

1



Screw the bracket to the column

2



3



Lock the bracket

4



Screw the headrest to the bracket

5



Headrest height adjustment



Loosen the adjustable handle and adjust the height of the headrest. Once the height is adjusted, tighten the adjustable handle.



ATTENTION! After adjusting the headrest, check the tightening of the elements. Loose components may shift and cause a risk of injury to the user.

Headrest tilt adjustment



1



2

Loosen the adjustable handle and adjust the tilt of the headrest. Once the tilt is set, tighten the adjustable handle.

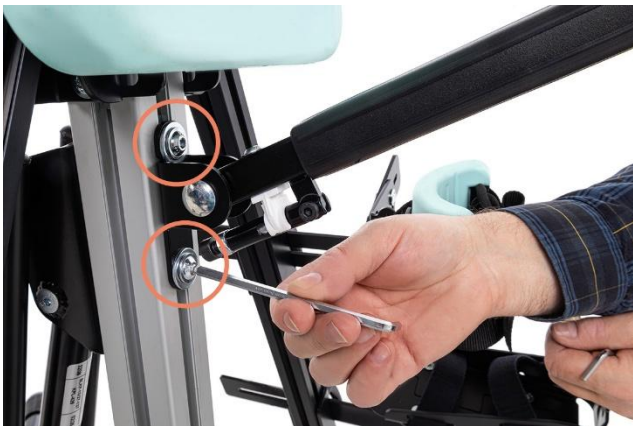
7.3. Back support for anterior standing with bracket



ATTENTION! To assembly the back support to the column, use a 5mm Allen wrench (included).

Assembly the support

1



Screw the bracket to the column

2



3



Lock the bracket

4



Slide the support into the bracket

5



Tighten the support to the bracket

6



Tilt adjustment



ATTENTION! To adjust the tilt of the back support, use a 5mm Allen wrench (included).

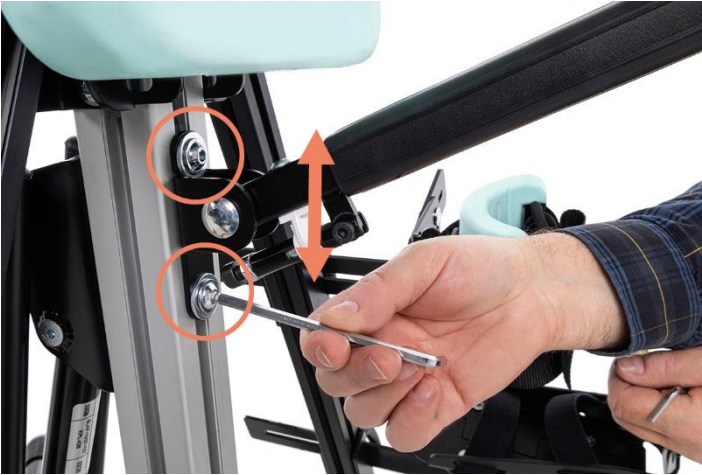
Loosen the screws and adjust the tilt of the support. Once the tilt is set, tighten the screws.

Forward/backward adjustment



Loosen the screw and set the support extension. Once the extension is set, tighten the screw.

Height adjustment



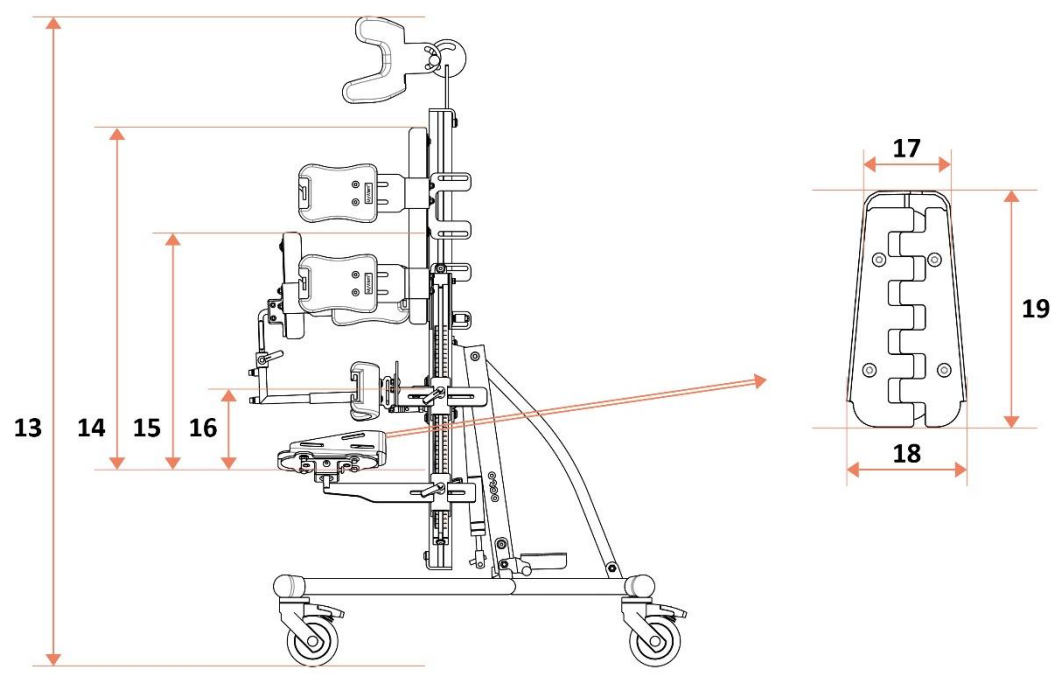
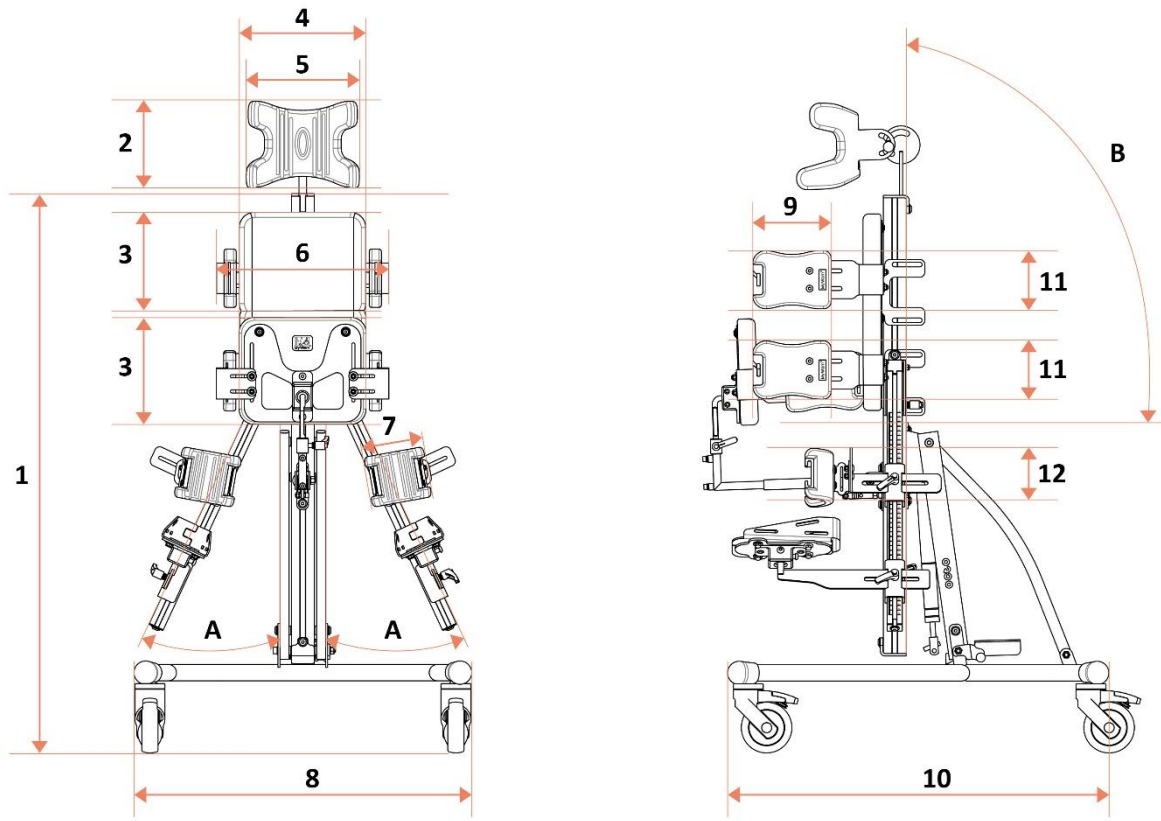
Loosen the screws and adjust the height of the support . Once the height is set, tighten the screws.

Back support with hip pads assembly

The installation and adjustment of the hip pads are described in section 6.5. Chest / hip pads.



8. TECHNICAL SPECIFICATION OF THE OCTO STANDING FRAME



Marking on the diagram	Parameter	Values
1	total height of the standing frame (without headrest)	92 - 133 cm*
2	headrest height	12 cm
3	height of the torso support / hip support	21 cm
4	width of torso support / hip support	25 cm
5	headrest width	22 cm
6	chest/hip spacing	19 – 26 cm*
7	knee support width (internal measurement)	8 cm
8	total width of the standing frame	67 cm
9	chest / hip pad width	16 cm
10	total length of the standing frame	75 cm
11	chest / hip pad height	12 cm
12	knee support height	10 cm
13	total height of the standing frame (with headrest)	105 – 175 cm*
14	height from the foot support to the torso support	80 – 100 cm*
15	height from the foot support to the hip support	45 – 65 cm*
16	height from the foot support to the knee support	16 – 31 cm*
A	abduction angle of one leg	0°- 25°
B	tilt angle	90° – -5°
-	max. user weight	50 kg
-	user growth	90-130 cm
-	weight of the standing frame (base)	25 kg
-	weight of the standing frame (with accessories)	41 kg

OctoStep – foot support system

Marking on the diagram	Parameter	Size S	Size M
17	rear width	6 - 7 cm	7 - 8 cm
18	front width	9 - 10 cm	10 - 11 cm
19	length	21 cm	24 cm

NOTES:

* Recommended ranges

Tolerance of measurement values +/- 20mm, +/- 1.5kg, +/- 1°

The manufacturer reserves the right to make changes to the technical parameters

8.1. Raw material composition of the standing frame

Powder-coated steel and aluminium, 100% polyester fabrics and plastic (PP, PA, PU, ABS).

9. DELIVERY AND TOOLS

The original packaging should contain the following items:



- Additional equipment in accordance with the order,
- Instructions for use with warranty card,
- 4 and 5mm Allen key,
- 10 and 13 mm ring wrench.

Before use:

- a. check that the packaging has not been damaged (in case of damage to the packaging, unpack in the presence of the supplier and check that none of the elements have been damaged),
- b. check the contents of the shipment according to the specification (if any of the components are missing, please contact the Seller).

The following tools are required to assemble, disassemble and adjust the riser:



10mm ring wrench – back support adjustment, foot support adjustment and knee support adjustment, chest and hip pad adjustment.



13mm ring wrench – rear leg mounting.



4mm Allen key – adjusting the foot support, adjusting the foot support in-plane, mounting and adjusting the therapy tray.



5mm Allen wrench – rear leg mounting, torso and hip support installation and adjustment, column height adjustment, abduction height adjustment, back support attachment to the column, front/rear adjustment of chest and hip pads, headrest installation for anterior standing.

10. MOUNTING AND DISASSEMBLING THE RISER

The product pre-packaged in the original carton is already partially assembled.

Complete the installation by following these steps:

- a) screw all the wheels,
 - b) unfold the standing frame by adjusting the parameters:
 - turn on/off the wheel brake,
 - adjust the torso support,
 - adjust the hip support,
 - adjust the knee support,
 - adjust the foot support,
 - adjust the stabilizing belt (chest and hip),
 - c) install and adjust chest and hip pads,
 - d) install the appropriate additional equipment and adjust the parameters:
 - set up a therapy tray (additional options),
 - put on and adjust the headrest (optional),
 - put on and adjust the back support for anterior standing (optional extra).
- Disassembly of the standing frame. In order to disassemble the standing frame, you should:
 - a) dismantle additional equipment,
 - b) fold the standing frame.

11. PREPARATION FOR USE

Before using the standing frame, you should:

- Place the product on a level surface, stable, providing easy access.
- Check that the standing frame has been properly disassembled and that all screws have been screwed correctly and that the mechanisms have been secured (closed).
- When using and adjusting the standing frame, make sure that the brake is engaged on all wheels.
- Make all adjustments correctly and adjust the standing frame to the user's needs. Check that all adjustment elements are properly seated and secured.
- Ensure that the user is not placed in the upright without clothing covering the body in the areas of contact with the upholstery. This is to prevent abrasions on the user's body and for hygienic reasons.
- Before starting use, make sure that the user's footwear is comfortable and provides proper stabilization of the ankle joints.
- In the case of using any additional aids such as ventilators, drains, bags, catheters, etc. It should be made sure that they are well protected against falling out, pulling out, clamping and do not interfere with the use of the standing frame.
- If orthopaedic devices are recommended to be used, they should be worn before using the device.

12. MOVING THE STANDING FRAME

The best way to carry the standing frame is to roll it over using its wheels.

In situations where this is not possible for safety, the standing frame should be lifted by the frame and carried by two people.

Extreme caution should be taken when moving or lifting the standing frame.



ATTENTION! It is NOT ACCEPTABLE to move or push the standing frame with the user using it.

13. CORRECT POSITION IN THE STANDING FRAME

The user should be placed in an upright position, maintaining the correct axis of the body.

The head should be in the midline of the body, without excessive leaning forward, backward or sideways.

The torso is straight, stably supported by pads and stabilizing belts, without rotation and lateral tilt.

The pelvis is symmetrical, without excessive forward tilt, backward tilt or asymmetry.

Lower limbs straightened at the knee joints (taking into account the individual capabilities of the user). The knees should be secured with knee supports to prevent them from bending.

Feet are set parallel, resting on the foot supports with the entire surface. The foot should be in a brace or medical shoe. The ankle joints should be positioned as close to neutral as possible.

All stabilizing elements should be individually adjusted to the user to ensure stability and safety without causing excessive pressure or discomfort.

ATTENTION! The device may only be operated and adjusted under the supervision of a medical staff or a trained caregiver.

14. USING THE STANDING FRAME

- **Preparing the device:**
 - Make sure that the standing frame stands steadily on a flat surface.
 - Make sure that the brake on all wheels is locked.
 - Check that all adjustment elements (pads, belts, knee supports, foot supports) are properly attached and in working order.
 - Adjust the height and width of the pads and belts to the user's dimensions.
- **Placing the user in the standing frame**
 - With the help of one or two people, carefully place the user in the device in a supine position.
 - Position the pelvis, torso and head in the axis of the body, feet parallel and the entire surface on the foot supports.
 - Adjust the pads and stability belts so that they provide stability without excessive pressure.
 - Secure the knees with knee supports, ankle joints in a neutral position.
- **Start of standing**
 - Gradually position the device vertically, observing the user's reactions.
 - Make sure the user is comfortably and securely supported.
 - The time spent in the standing frame should be adjusted according to the recommendations of the doctor or physiotherapist.
- **During use**
 - Monitor the user's condition – comfort, skin color, signs of fatigue or discomfort.
 - If pain, dizziness, or any other concerning symptoms occur, stop standing immediately.
- **End of use**
 - Carefully remove the user from the standing frame using one or two people.
 - After each use, check the condition of the device and clean the items contacting the user if necessary.

15. TRANSPORT IN THE CAR AND IN OTHER VEHICLES

During transportation, the device should be empty and folded, which reduces the risk of accidents or damage.



The OCTO standing frame is not intended for transporting the user in a car or any other means of transport.

16. CLEANING AND CARE

The standing frame, supports, and pads should be cleaned with a soft cloth dampened with lukewarm water and a small amount of mild detergent.

The belts can only be washed by hand at a temperature of up to 30°C.

Stains should be removed immediately after they are formed on the surface.

WARNING! Do not clean with chemical agents containing solvents or bleach. The Manufacturer is not responsible for any damage resulting from the use of inappropriate cleaning agents.

Make sure the product is always dry before use.

When using detergents dedicated to this type of material – follow the instructions for the product used.



Hand wash only



Do not bleach



Do not tumble dry



Dry in a horizontal
position



Do not iron

17. STORING THE STANDING FRAME

The standing frame should be stored in a dry and well-ventilated room at a temperature between +5°C and +40°C, away from sources of moisture, direct sunlight, and heat sources. In case of long-term storage, the additional actions described in section 21 “every one month” should also be performed.

18. SERVICE AND PERIODIC INSPECTIONS

To ensure safe and trouble-free use of the standing frame, it must be regularly and thoroughly subjected to the inspections and maintenance procedures described below.

If the user of the standing frame is unable to perform the specified tasks independently, the device should be returned to a specialist service center for standing frames or directly to the Manufacturer, who will properly carry out the inspection and necessary maintenance procedures. These services may be subject to additional charges.

ATTENTION! The manufacturer is responsible for defects or technical damages of the standing frame that occur only during the proper operation of the standing frame. The Manufacturer is responsible for the proper functioning of the standing frame only if all the Manufacturer's recommendations are strictly followed.

ATTENTION! The manufacturer is responsible for the proper functioning of the standing frame only if original parts and original accessories are used in it.

Any repairs must be carried out by specialised, authorised Service Centres (see section 24) or directly by the Manufacturer. Repairs to the standing frame performed by persons other than the authorized Service Provider or the Manufacturer will void the warranty. The Manufacturer is not responsible for personal injury or damage to the product that may result from repairs performed by persons other than the authorized Service or the Manufacturer.

Servicing should be performed:

- **Each time before using the riser**
 - Wheel brake functionality check – When the brake on each wheel is engaged, the wheels should be locked and must not rotate.
 - Check of structural component fastening – All mechanisms of the standing frame and its moving parts must be inspected.
 - The condition of the structural profiles must be visually inspected. These components must not be damaged or cracked.
 - Check the correct assembly of all components.
 - Inspect the belts for visible damage.
- **Every week**
 - Cleaning the standing frame.
- **Every month**
 - Visual inspection of moving parts and adjustment mechanisms.
 - Check all screw connections for looseness.
 - Verify that the wheels rotate freely and are not damaged.
 - Inspect the frame welds and threads for any damage.

19. DISPOSAL

Disposal and recycling: in accordance with the regulations in force in your country.

20. COMPLIANCE WITH MEDICAL DEVICE REQUIREMENTS

Class I Medical Device compliant with Regulation (EU) 2017/745 of the European Parliament and of the Council of 5 April 2017 on medical devices. The manufacturer has issued an appropriate declaration of conformity for the product, which can be found on the www.mywam.eu page

21. LIST OF AUTHORIZED SERVICE POINTS

POLAND

MyWam Sp. z o.o.

Wiosny Ludów 91, 40-373 Katowice, Poland

tel: +48 32 733 11 31

Website: www.mywam.eu

E-mail address: mywam@mywam.eu

22. WARRANTY CARD

Series and Number:

Date of purchase: - -

Stamp and signature of the seller:

.....

.....

.....

Warranty conditions

- The manufacturer (Guarantor) provides the Buyer with a warranty for the purchased standing frame for a period of 24 months, counting from the date of purchase.
- **The Buyer complaining about the standing frame should deliver it to the Seller in the packaging, clean (free of stains, additional equipment not belonging to the product, moisture, hair, etc.) together with the elements of the standing frame protected against damage.**
- **Damage caused by insufficient protection of the consignment of the standing frame and its components is not subject to warranty repairs.**
- The Complainant (Buyer) may not demand compensation from the Manufacturer in the event of damage to the consignment if it improperly labels or incorrectly insures the consignment of the standing frame and its components.
- The warranty period in the event of the complaint being accepted is extended by the time of repair of the standing frame, which is counted from the moment the product is handed over to the Seller under the warranty to the day on which the product was ready for collection.
- The actions provided for in the instruction, which the user of the standing frame is obliged to perform on his own and at his own expense, cannot be performed as part of a warranty repair.
- Use of the standing frame not in accordance with the intended purpose, not in accordance with the instructions for use or in accordance with the rules of proper operation will void the warranty.
- Making any structural changes to the standing frame will void the warranty (in the relevant area of the changes or the whole thing).
- Damage to the standing frame resulting from: improper operation, improper maintenance, improper storage of the standing frame, mechanical damage and natural abrasion and wear of parts (e.g. upholstery, wheels) are not covered by the warranty.
- The manufacturer warns against carrying out warranty repairs in unauthorized service facilities. Finding such a repair or arbitrary modification of the standing frame will void the warranty.
- **The warranty card is valid provided that it has: the date of sale confirmed by the Seller's company seal, the Seller's signature, the type and serial number of the standing frame.**
- The warranty card is valid provided that it does not contain deletions and corrections.
- The manufacturer of the standing frame runs a paid post-warranty service at its headquarters.
- The manufacturer specifies the expected period of use of the product at 4 years. Further use after this period is possible, but taking into account the care for safety and comfort of use, we recommend carrying out a technical inspection by the manufacturer or an authorized service center. The inspection service is paid and includes an assessment of the technical condition of the device, safety verification and any necessary maintenance activities.
- In matters not regulated by this warranty card, the provisions of the Civil Code (Poland) shall apply.
- Any claims under the warranty or warranty of the standing frame should be directed to the Seller.

23. NOTES